

Woodland Lake Park



Distance: 3 miles around Hitching Posts Loop Trail and back to boat dock. 0.15 Mile to Turkey Track Trail. 0.75 miles to Pinecrest Trail. 1.5 miles to Big Springs Trail. 1 mile around Lake Loop Trail. 2.0 miles along the Hitching Post Loop trail. There is horse access to the Hitching Post Trail along the Western side of the lake.

Difficulty: (as rated by the US Forest Service)

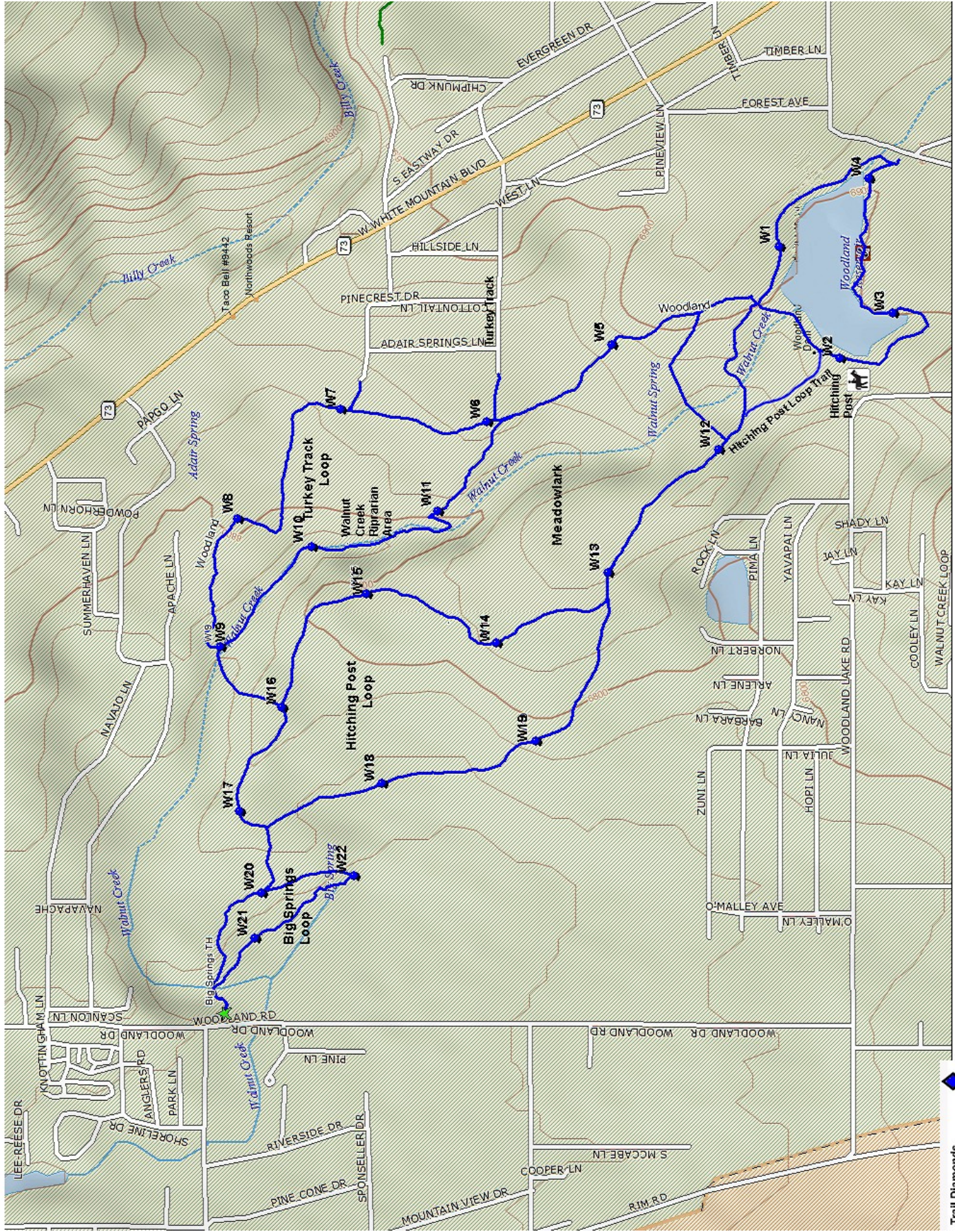
Hiking - Easy
Mountain Biking - Easy
Equestrian - Easy

Trailhead Parking: Parking at lot off of Woodland Rd and at the fishing dock and ramadas.

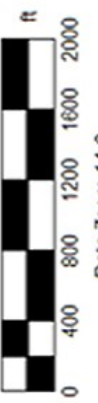
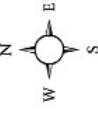
Access to Trail: From the traffic light on AZ 260 at Pinetop-Lakeside Plaza, go south (Toward McNary) 1.2 miles. Turn right on Woodland Rd and go 0.3 miles to the first entrance (the ramadas and boat dock) or go 0.4 miles to the second entrance (the ball fields and tennis courts).

Trail Highlights: A rural treasure within city limits, the trails offer something for almost everyone. A paved ADA-designed trail, ideal for strollers, wheelchairs, etc. winds around the lake. Hike, bike or ride a horse along the rugged and beautiful trails.

This trail has coded white diamonds, approximately 1/4 mile apart, which correspond to the codes on the map below. If you need to call 911 for an emergency, tell the 911 operator the code on the nearest white diamond so that emergency responders can more readily locate you.



- Trail Diamonds
- Connector - Green Dots
- Shortcut - Yellow Dots
- Vista - Red Dots
- Trailhead - Green Star



86/2013
Data Zoom 14-0