

Land of the Pioneers #651



Distance: 8.7 miles miles around the trail; 3.5 miles for Loop 1, 6.8 mi combining Short Loops 1 & 2, 4 miles for Loop 2 and 3.5 miles for Loop 3.

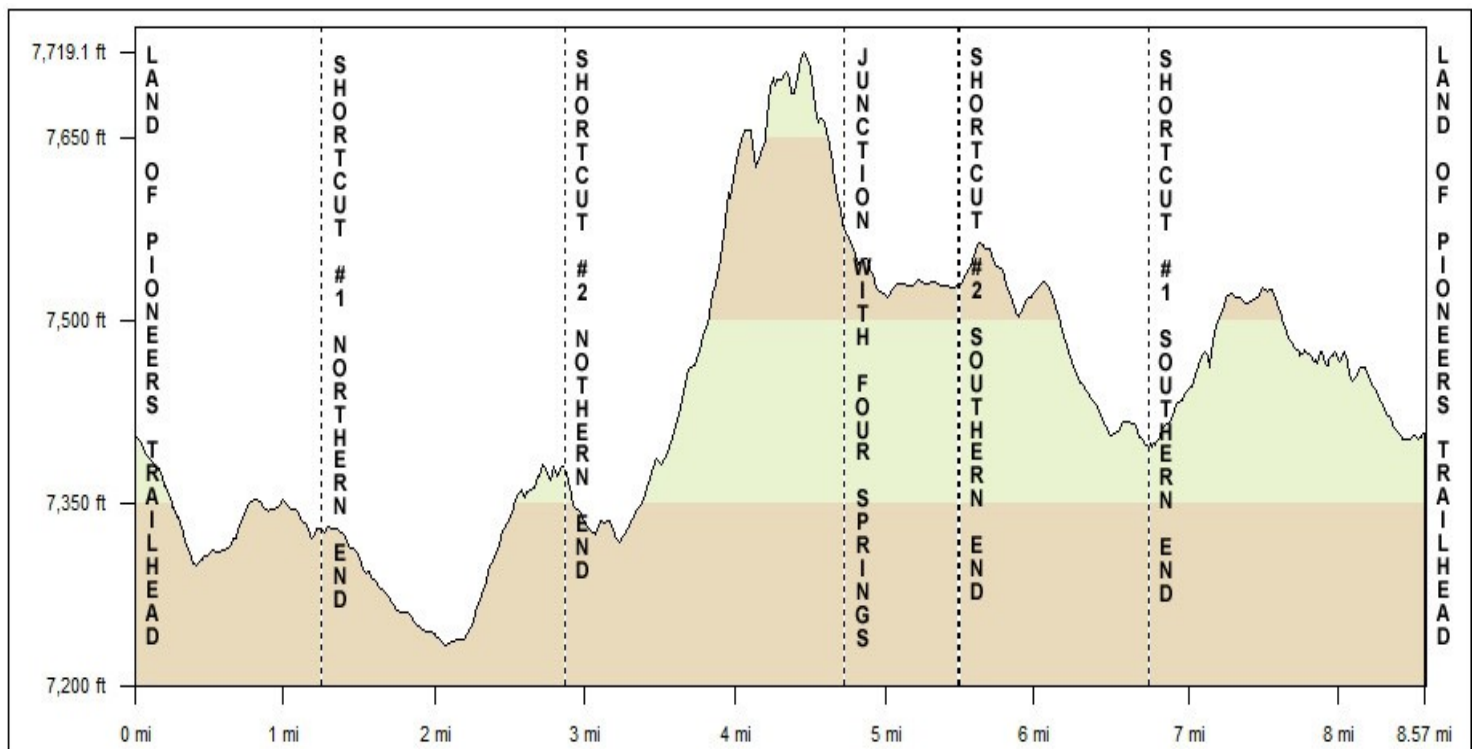
Difficulty: (as rated by the US Forest Service)

Hiking - Moderate
Mountain Biking - Difficult
Equestrian - Difficult

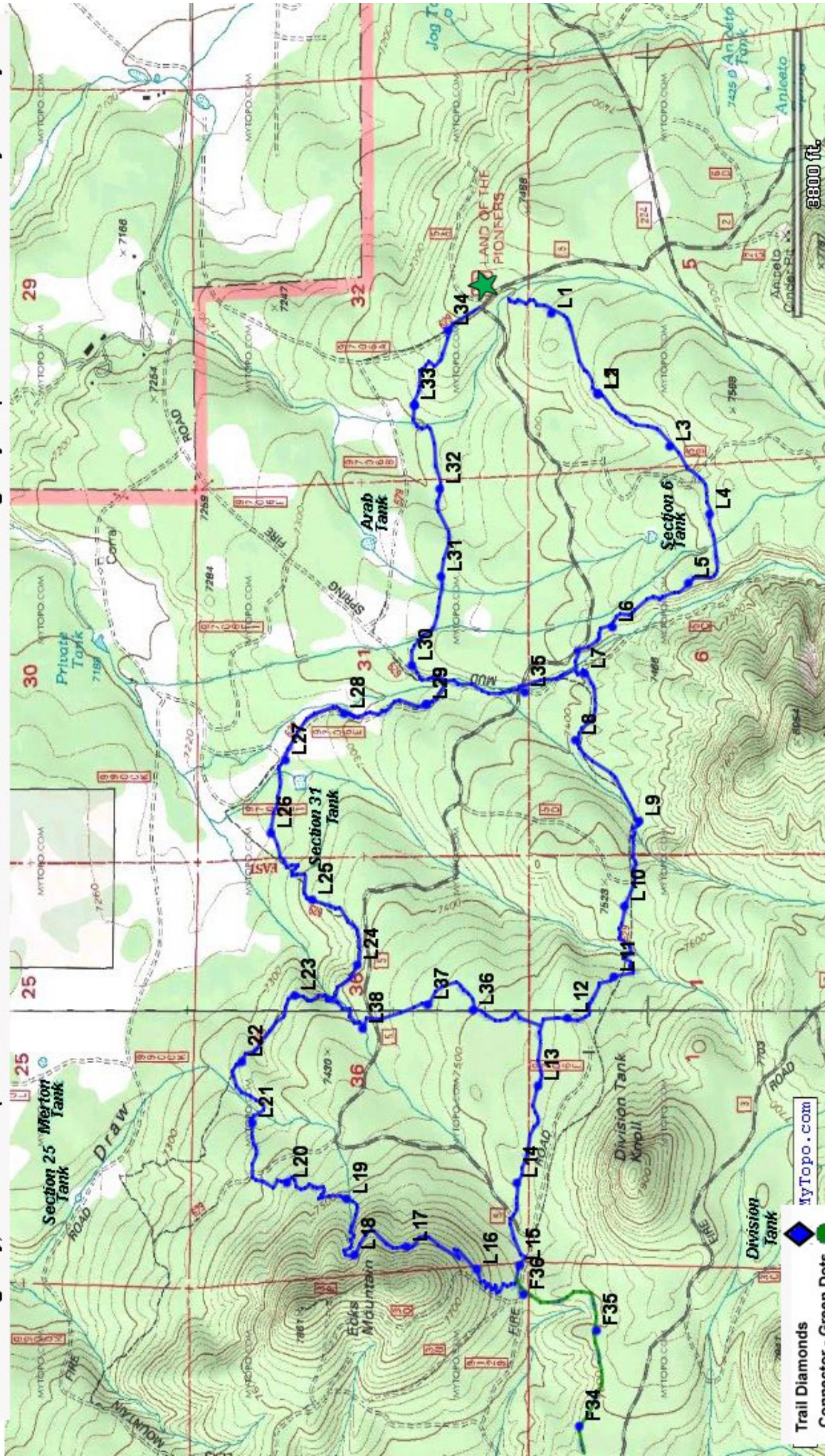
Parking: Limited, accommodates trailers

Access to Trail: From Show Low, travel East on AZ 60 for 19.4 miles. Turn South on CR 3140 (FR 224), through Vernon then West on FR 5 for 0.5 Mi. The trailhead is on the right.

Trail Highlights: The Land of the Pioneers Trail winds through ponderosa, pinion and Juniper pine. Excellent views of the Eastern White Mountain are had from Ecks Mountain on the Long Loop. The box canyon and ruins of a pioneer cabin onto in the North leg of the loop are must sees. Two shortcut trails make this trail a mini Trail System unto itself. Ecks Mountain is a moderate climb from the South side, and a longer, steeper climb from the North side.



This trail has coded white diamonds, approximately ¼ mile apart, which correspond to the codes on the map below. If you need to call 911 for an emergency, tell the 911 operator the code on the nearest white diamond so that emergency responders can more readily locate you.



- Trail Diamonds
- Connector - Green Dots
- Shortcut - Yellow Dots
- Vista - Red Dots
- Trailhead - Green Star

